

TRANSFORMING LIVES

A Decade of Impact at BML Munjal University
2014 – 2024



TRANSFORMING LIVES

A Decade of Impact at BML Munjal University

2014-2024

Copyright

© 2025 BML Munjal University. All rights reserved.

Year of Publication

First published in March 2025.

Publisher Information

Published by
BML Munjal University
67th Milestone, NH-48, Kapriwas, Haryana – 122413, India

Credits

Ms. Rukmini Dutta, Social Sector Consultant and Communications Office of BMU
Ms. Negar Tripathi, Ms. Sandeep Kaur, Ms. Roobal Saxena

Design & layout: LADYFINGERSCO. and Mr. Pankaj Parashar, BMU

Cover Design: LADYFINGERSCO.

Cover Photo: Ms. Nayonika Bhagi, B.A., LL.B. (Hons.) (2023-28)

No part of this publication may be reproduced, stored in a retrieval system, or transmitted in any form or by any means without prior written permission from BML Munjal University.

Disclaimer

All data, facts, and figures presented in this report are based on the most recent information available and are accurate as of March 2024.

Contact Information

For more information, visit www.bmu.edu.in or write to communications@bmu.edu.in

Table of Contents

07

Introduction to the
Impact Report

10

Vision and Mission

11

A Decade of Purpose
and Progress

12

Our Guiding Principles

14

BMU Impact at a Glance

16

Meet the Founders

21

Shaping Talent

24

Crafting Real-World Skills
through Experiential Learning

30

Graduate Outcomes

32

The Making of a National
Champion – Tarun Yadav

33

Student Enrollment Growth

34

Mentoring Philosophy

38

Access to Education
& Social Impact

41

Diversity and Inclusion

43

Catalysing Change –
Research & Development

50

Entrepreneurial Ecosystem

54

Strengthening Rural
Communities: Impact at
Grassroot Level

58

From Ideas to Impact: Start-ups
Leading the Way

62

The Pillars of BMU's Education:
Faculty and Leadership

64

Where the Best Meet:
Thought Leadership

67

Interdisciplinary Learning

68

A Legacy of Inspiration:
Leaders Who Have Shaped
BMU's Journey

70

Industry Alliances

71

Academic Alliances

72

Laying the Foundation

76

Of the Students, By the
Students, For the Students

78

Sustainability at BMU

82

Financial Sustainability

86

Strengthening BMU's
Future Pathway

90

Our Impact, Our Promise



Introduction to the Impact Report

At BML Munjal University (BMU), impact is not just a measure—it is our guiding principle. Inspired by the vision of our founder, Dr. Brijmohan Lall Munjal, our journey has been shaped by a commitment to transformative learning, entrepreneurial thinking, and ethical leadership. We aim not only to impart education but also to equip individuals with the skills to navigate a rapidly evolving world with confidence and purpose.



Our academic approach emphasises practical knowledge, translational research, and leadership that is both responsible and adaptable. Through industry collaborations, an inclusive community, and a focus on innovation, we strive to create an environment where students and faculty can tackle real-world challenges effectively.

As BMU marks a decade of academic growth and impact, this report reflects on our progress, highlighting key initiatives and milestones. While we take pride in our journey, we remain focused on continuous improvement and future possibilities, working towards even greater contributions to education and society.

“ Educationists should build the capacities of the spirit of inquiry, creativity, entrepreneurial and moral leadership among students and become their role model.”

SHRI MAULANA ABUL KALAM AZAD,
FIRST EDUCATION MINISTER OF INDIA





Dr Brijmohan Lall Munjal and Mr Akshay Munjal, Pro-Chancellor, BMU, bringing a vision to life: laying the brick and mortar foundation of the campus, 2013.

Brijmohan Lall Munjal (1923-2015)

"Life's education and learnings are both within and outside the walls of the classroom...."

This Institution has been founded in memory of the Hero Group's Founder and Chairman - a true graduate from the University of Life. A man of values. A leader who gave of himself to everyone all the time. In his world of learning there was equal importance of practice and theory, skills and pedantic knowledge, and mentoring was as important as teaching. Throughout his life, he had great faith in the innate and inborn skills of the young, their ability to apply knowledge, their capacity to learn and to become leaders. He believed that a high quality education based on good values could provide a positive transformation to any society. In different ways, BML Munjal University seeks to celebrate and emulate the life and times of this extraordinary individual by creating a unique learning experience inside and outside the class.



Vision

Nurturing Talent for the Real World

BML Munjal University seeks to nurture ethical leaders who are skilled, knowledgeable and have the life skills required for leading their organisations to success.

The university shall seek the advancement and dissemination of practically oriented knowledge benchmarked with the best global standards.

Mission

Inquire, Inspire and Impact

BML Munjal University aims to be a leading university for the quality and impact of its teaching, research and linkages with major stakeholders. The focus of the university is to find creative solutions to problems through application of knowledge. The university aims to create a talented community of students and faculty who excel in teaching, learning and research, in a creative and stimulating environment. The university will collaborate with other institutions for development of science, technology and arts in the global context.

A Decade of Purpose and Progress

What this report attempts is to give you a sense of the major milestones that BMU has crossed in its first ten years, some of its major achievements and a few inspiring moments. So many people have contributed towards the success of BMU's journey so far—students, faculty, staff and university leaders, as

well as co-travelers from the larger ecosystem. Ten years is a brief period in an institution's life. There are many more promises to keep and heights to reach. The focus is on nurturance of excellence, empathy, creativity and ethical leadership. And the credo continues to be: Inquire, Inspire and Impact.

PROF. SHYAM MENON,
VICE CHANCELLOR, BMU



Our Guiding Principles

Our mission and vision serve as the compass guiding our journey towards excellence and societal impact. These guiding principles are the pillars upon which we build our future, inspiring every member of our community to contribute to a better world.



Care: Towards People, Communities, and the Environment

We are committed to nurturing a compassionate community that prioritises individual well-being, fosters societal development, and safeguards our planet.

Excellence: In Learning, Research, and Community Service

We strive for the highest standards in education, research, and service, fostering an environment where innovation and creativity flourish. Our curriculum is continuously updated in collaboration with industry experts, ensuring that our students receive a world-class education that prepares them to excel in a dynamic global landscape.





Freedom of Thought: Encouraging Thought Leadership

We cultivate an environment where intellectual curiosity is celebrated, and diverse perspectives are encouraged. This freedom empowers our students and faculty to explore new ideas, challenge existing paradigms, and contribute meaningfully to societal progress.

Integrity: Ownership and Accountability

We uphold ethical standards, fostering a culture of honesty, responsibility, and transparency. Integrity guides our journey, shaping a community grounded in trust, responsibility, and purpose.



BMU Impact at a Glance

Reflecting a Decade of Progress (Data as of 2024)

STUDENT STRENGTH

2,571

students.

Engineering: 55%; Liberal: 2%;
Law: 7%; Management: 38%

Representation from

28 states in India.

INSTITUTIONAL GROWTH

Expanded from Management & Engineering to Law and Liberal Studies.

Accredited **Grade 'A'** by NAAC.

School of Management ranked amongst

top 100

B-schools in India by NIRF for four consecutive years.

Awarded **Diamond Rating** in Management by QS I-GAUGE in 2022.

Awarded **Platinum Rating** by QS I Gauge in Engineering in 2024.

ACCESS TO EDUCATION & SOCIAL IMPACT

40%

of students receive scholarships, reducing financial barriers to education.

54%

of all students on Financial Aid are from families earning < ₹8 LPA, ensuring access to quality education across socio-economic strata.

33%

female enrollment in 2024 (up from 12% in 2014), fostering gender diversity, especially in STEM and business programmes.

Support for first-generation learners, providing mentorship, academic guidance, and financial aid.



*** Institution Innovation Council (IIC): 4 Star Rating by AICTE.**

ENTREPRENEURSHIPS & START-UPS

₹350 CR+

valued start-ups.

500+

jobs created.

Mera Business Training:
Empowering 1,000 rural women entrepreneurs in 1,000 days.

GRADUATE SUCCESS

90%

placement rate.

100+

entrepreneurs nurtured.

₹9-15L

average salary per annum.

Highest salary going up to

₹40L

per annum.

INDUSTRY & GLOBAL PARTNERSHIPS

Collaborations with **Siemens, Shell, HMCL, NITI Aayog, MG Motors, HDFC, Fraunhofer-Gesellschaft, NHPC, ICICI Foundation, Hinduja, Microsoft, Axis Bank** and top universities in India and abroad.

RESEARCH & INNOVATION

95+

Patents filed.

63

PhD scholars.

06

Centres of Excellence in AI, Robotics, Law, Renewable Energy and Sustainability.

₹30 CR+

invested.

EXPERIENTIAL & INTERDISCIPLINARY LEARNING

Integrated **real-world projects, legal aid, incubation programmes, and industry exposure.**

Meet the Founders



[from left to right] Mrs. Sonaal Munjal, Prof. Gerry George, Mr. Sunil Kant Munjal, Mr. Suman Kant Munjal, Mr. Pawan Kant Munjal, Mr. Akshay Munjal, Mr. Ujjwal Munjal at the inauguration of HERO North Block Building at BMU in 2018.

“**BMU is not just an institution; it is a catalyst for transformation. From its inception, I have had the privilege of witnessing its journey—one that nurtures visionary leaders, ignites innovation, and shapes a future defined by wisdom, resilience, and progress.**”

DR. PAWAN KANT MUNJAL
GOVERNING BOARD MEMBER, BMU & EXECUTIVE CHAIRMAN, HERO MOTOCORP



Dr. Brijmohan Lall Munjal receiving Padma Bhushan Award from Dr. APJ Abdul Kalam in 2005.

“BMU has laid a strong foundation for excellence in just ten years. Universities usually take decades to build credibility and establish a reputation, yet we have already taken significant strides. Right from inception, we have tried to set up more than a teaching campus; an attempt has been made to foster experiential learning, independent thinking, and holistic development. Inspired by our Founder’s ‘University of Life,’ efforts have been made to integrate real-world wisdom into a modern, meaningful, and impactful curriculum.

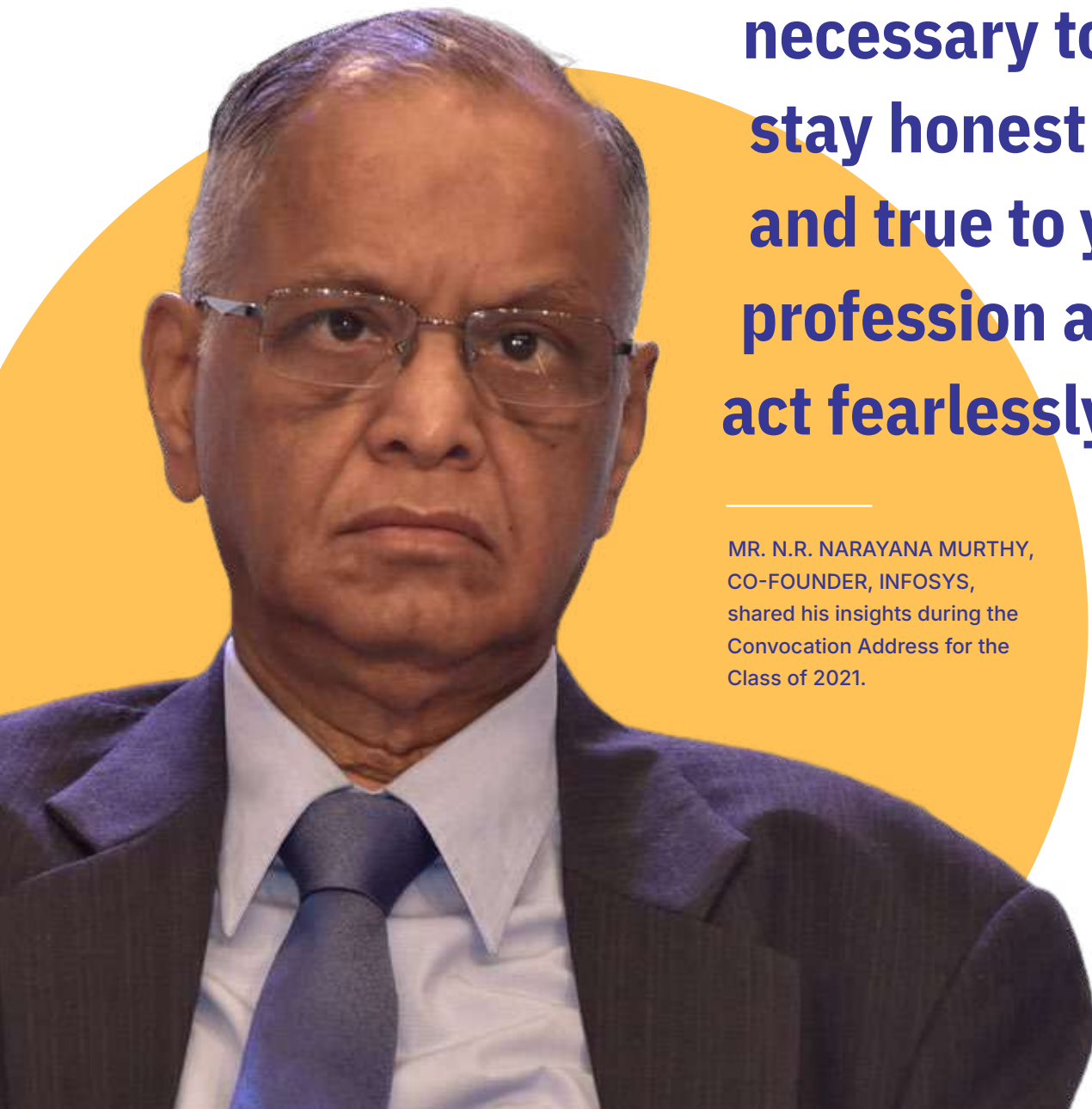
“BMU is a celebration of a learning ecosystem that is contemporary, adaptable, and forward looking and today, as India emerges globally, we wish to become known and recognised as a place that transforms lives and shapes future leaders.”

MR. SUNIL KANT MUNJAL
CHANCELLOR, BMU & CHAIRMAN, HERO ENTERPRISE

“ The university has been a citadel of learning named after Late Munjal Sahab, from whom I learnt so much over the years. On this eventful day, it is worthwhile to consider how you can use your education to impact society. The purpose of your education is to assume your responsibilities to society, be a model citizen, and, most importantly, fulfil our founding father's dreams. One of the most important challenges in one's life is to win the battle of your mind and to move on from a regressive mindset to a progressive one.

**“It's also
necessary to
stay honest
and true to your
profession and
act fearlessly.”**

MR. N.R. NARAYANA MURTHY,
CO-FOUNDER, INFOSYS,
shared his insights during the
Convocation Address for the
Class of 2021.





“ A University stands for humanism, for tolerance, for reason, for the adventure of ideas and for the search for truth. It stands for the onward march of the human race towards ever higher objectives. If the Universities discharge their duties adequately, then it is well with the nation and the people.”

PT. JAWAHARLAL NEHRU
First Prime Minister of India



Shaping Talent

BMU was founded with a bold vision—to redefine excellence in education by fostering innovation, ethical leadership, and real-world impact. Our graduates are more than just learners; they are **problem-solvers, critical thinkers,** and **innovators** who apply their **disciplinary expertise** to tackle complex global challenges. They embody **ethical responsibility,** demonstrating integrity and

excellence in both personal and professional spheres. With a strong **entrepreneurial mindset,** they adapt to change, drive innovation, and create meaningful societal impact. BMU nurtures **collaborative leaders** who thrive in diverse, global environments, communicate with clarity, and approach the world with empathy and purpose. Empowered by lifelong learning, they are not just prepared for the future, they are shaping it.

The university's strategic focus is centred on Entrepreneurial Learning, Transformative Learning, and Aspirational Faculty, reinforcing the Founders' vision and BMU's strengths.



Launched B.Tech, BBA, B.Com and MBA courses. **2014**

“ 45% of all activities that take place in the University is hands on.

And I think that hands-on, practical way of learning – being involved in smaller groups, addressing problem statements, design challenges, or manufacturing perspectives – really helps students develop a sense of urgency to get things done. It also encourages them to experiment and take risks.”

MR. MIKE CLARKE,
FORMER CHRO & COO, HERO MOTOCORP,
addressing students at BMU campus in 2023.



Crafting Real-World Skills through Experiential Learning

BMU's experiential learning approach bridges the gap between theory and practice, fostering industry readiness, innovation, and social impact. Through industry-immersive internships, gamified learning, interdisciplinary projects, and global exposure, students develop critical thinking, problem-solving, and leadership skills. Immersive initiatives like

the Practice School, start-up incubation, social projects, and research-driven coursework empower students to navigate complex challenges with confidence. By integrating real-world applications into academics, BMU ensures that graduates are not just learners but changemakers equipped to drive meaningful impact in their fields and communities.

How we do it



The Practice School

The University has an immersive internship programme called the Practice School that allows students to experience corporate roles and responsibilities through on-the-job training. At the School of Management, students undergo multiple online simulations as a part of their coursework to experience the intensity of management decision-making.

Interdisciplinary Courses

We foster interdisciplinary learning through cross-domain courses, research, and collaboration, equipping students with diverse perspectives to tackle real-world challenges. Moving forward, the aim is to deepen co-creation and strengthen our leadership in interdisciplinary education.





Joy of Engineering

This mandatory first-year course for all Bachelor of Technology branches offers students a comprehensive introduction to experiential learning, a cornerstone of modern engineering education. The course provides a platform for students to engage in practical projects, both virtual and physical, fostering innovation and practical application of theoretical concepts. By experimenting with small-scale, theme-based projects, students gain valuable experience and insight into the principles underlying various engineering products and systems.

“ The Joy of Engineering (JOE) course had its moments. What I genuinely enjoyed was the hands-on project. I’ve always been curious about how hardware ‘knows’ what to do and working on a real application gave me a glimpse into IoT and practical engineering. It wasn’t just about theory—we got to see concepts in action, which made the learning experience more engaging.”

SAKSHAM GARG, B.TECH CSE (2023-27, completed the JOE programme in 2023-24)

Social Immersive Projects

Our Sankalp initiative at the School of Management enables students to go beyond classrooms and solve real-life societal and economic problems in the villages around the University. Our NSS Wing also plays a significant role in these efforts, making a meaningful impact on the community.

Prototyping

In courses like Integrated Decision-Making students create prototypes of products and try and test the same in real-life contexts. Many such projects and ideas are presented at our flagship pitch fest organised by the University start incubator Propel and Hult Prize competitions.



Start-up Ecosystem

Our Institute of Innovation and Entrepreneurship brings industry stalwarts' experience into our classrooms. Their expertise also guides the practical work of students involved in start-ups currently being incubated on campus.

Gamification

It is a challenge to engage millennials in classrooms, be it offline or online. At BMU we often design gamified environments to ensure student engagement and participation. This includes, but is not limited to, incorporating board game simulations, group assignments, outbound learning initiatives like river rafting, etc.

Co-curricular Credits

Our UG course curriculum credits are also offered for participating in co-curricular activities through the different clubs.

Language Labs

The involvement of our Language Labs ensures every student participates in developing their communication skills.

“ BMU is doing excellent work for society by seeding the thought of research and innovation in young minds. Holistic commitment to nurture talent through experiential learning is commendable. Keep it up!”

MUSSARAT HUSSAIN
Former Head - Leadership & HR Transformation,
Maruti Suzuki India Ltd

Industry–Academia Connectedness

We have built a robust ecosystem through strategic alliances with industry, academia, and civil society, reinforcing its focus on real-world impact. From its founding collaboration with Imperial College London to ongoing partnerships with leading global institutions, BMU continues to enhance curriculum, research, and global engagement.

Case-Based Pedagogy

Solving problems is at the heart of all course delivery at our university. Therefore, many courses follow a case-based pedagogical approach. We have licensing agreement with Harvard Business Publishing to utilise their cases in our classrooms.

Research Projects

In the courses, students are encouraged to work on research projects related to water purification systems, solar energy, electric vehicles, and legal issues around them. At BMU we believe that these immersion activities improve a student's critical thinking and problem-solving abilities and help them build their future careers in an interdisciplinary manner.



Global Immersion Programmes

The Global or International Immersion Programmes at the School of Management and various international training programmes keep students' engagement with the coursework and the university high.

“ My experience at Nanyang Technological University (NTU) Singapore as part of the summer school exchange programme was truly memorable and enriching. BMU gave me this incredible opportunity to immerse myself in a new academic environment while making lifelong memories. It's a fantastic opportunity to learn, grow, and experience life in a dynamic and supportive setting.”

BAYYAPUREDDY VIBHU GNAN, B.TECH (2023-27, participated in the NTU Summer School Exchange Programme in March 2024)



Moot Court

Our School of Law organises moot courts to train students in navigating the complexities of the legal system and making sound, judicious decisions.

“ At BMU, experiential learning for law students is deeply integrated into the curriculum. From engaging in live client interactions at the Legal Aid Clinic to participating in intense moot court competitions, we get firsthand exposure to legal practice. Regular visits to courts, tribunals, and law firms help us bridge the gap between theory and real-world application. The university emphasises research-driven learning, where we analyse landmark judgements and draft legal documents. Through these experiences, we develop not just legal knowledge but also advocacy, negotiation, and critical thinking skills essential for a successful legal career.”

PRABIR SANDHU, B. A. LLB (2023-28)

Immersion Module

Opportunity for immersion to engender a transformative praxis—exploring the interaction of 'knowing', 'being' and 'doing.' Inter-disciplinary minors (16 credits), of which 8-12 credits can be transacted on field as part of the Immersion Module (Domains: Child and Youth Cultures; Human Ecology; Philosophical Counselling)

Workshop of the Future

An initiative within the curriculum, 'Workshop of the Future' is a virtual-cum-physical lab that helps students bridge the gap between theory and practice, and participate in activities like the conception of product design, testing, etc. through advanced software and machinery.

“ From battling with stubborn JavaScript bugs to creating responsive Next.js pages, I spent countless hours building full-stack applications that taught me more than any tutorial could. Due to BMU’s emphasis on practical learning, I am not just building projects—I am learning how to think on my feet and solve real-world problems.”

AMARTYA KUMAR, B.TECH CSE (2023-27)

“ The focus here [at BMU] is on providing the right knowledge, imparting the relevant skills for enduring success in business management careers, and most importantly, shaping the right attitude in the candidates. I’ve had several interactions with both students as well as the faculty members, and in each of them, I could see that they have clearly imbibed the constant ability to be always curious to learn and thereby create an impact! I wish them all success.”

SURESH MEHRA
FORMER SENIOR VP, HEAD OF TALENT ACQUISITION, AXIS BANK

Graduate Outcomes

90%

placement rate.

100+

entrepreneurs nurtured
in 10 years.

**₹9 -
15L**

average salary per annum.

Highest salary
going up to

₹40L

**Recruitment partners
include top national and
international organisations.**

ALUMNI ACHIEVEMENTS

100+

alumni currently working in senior leadership roles at prestigious organisations such as HMCL, The Economic Times, Google, Hyundai, BNY Mellon, Federal Bank, SBI, KPMG, Deloitte, EY, ServiceNow, Commvault, Bain & Company, and many more.

Some took the paths to become ISRO scientists, National Level Gymnasts, Political Consultants etc.

“ BMU is a place where creativity and talent is given the first priority. It is well known for the quality and impact of its teaching.

AMISHA SINGH, MBA (2017-19)





“ Throughout your life, you will have the option of surrounding yourself with people who push you to grow. They will be smarter than you and will challenge you to think better. Then, there will be those who hold you back, making you feel like the smartest person in the room. Always choose the former. You will only improve if the people around you are brighter and more ambitious than you. So, always seek to be in the company of those who inspire you to grow—

it will ensure you progress faster in life.”

RITESH AGARWAL, CEO, OYO,
speaking during the Convocation
Address for the Class of 2018.

The Making of a National Champion – Tarun Yadav

When Tarun Yadav (B.Tech 2014-18) joined BMU, his path seemed set in engineering. But passion has a way of forging its own course. Over the years, his interest in Jiu-Jitsu grew into a full-fledged pursuit, leading him to represent India at the **Asian Games in Hangzhou, China**.

Balancing academics and sports wasn't easy, but Tarun embraced the challenge, securing **eight national titles, a top-eight Asian ranking, and multiple international medals**. His dedication and resilience made him a role model within the BMU community.

As he prepared for the Asian Games, BMU supported his journey by sponsoring his training in Brazil, a key milestone in his development as a professional athlete. Reflecting on his experience, Tarun shares:

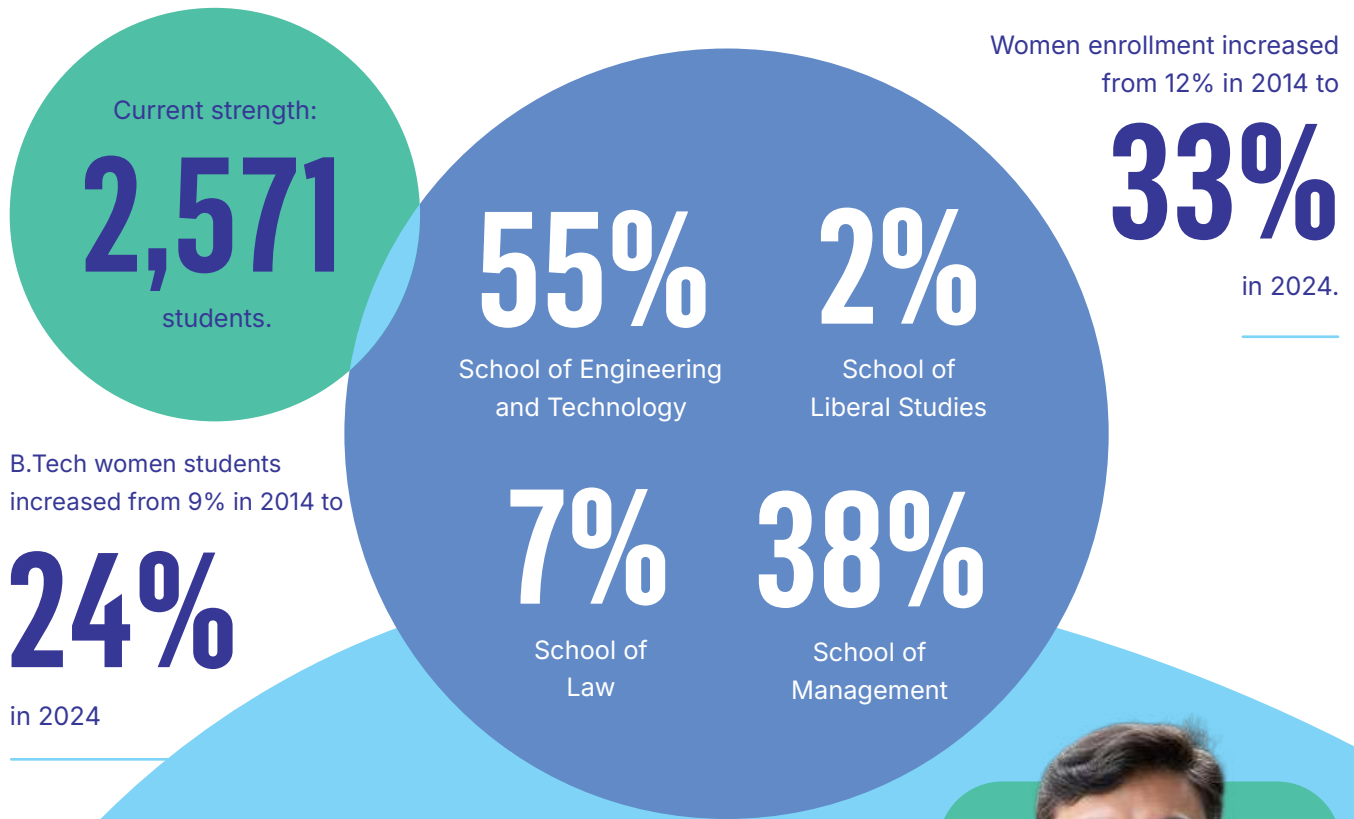
"My positive experiences at BMU inspired me to pursue a life and career in sports. I became part of India's first-ever contingent to represent the country in Jiu-Jitsu at the Asian Games in Hangzhou, China. Even after graduation, the university continued to support me and once again became my first sponsor for my preparation for the Asian Games. This sponsorship allowed me to travel across the world to Brazil for training.

“ From taking my first small step into the world of sports in 2014, a decade later, I now stand with eight national titles, a top-eight Asian ranking, multiple international medals, and the honour of wearing the ‘INDIA’ patch and the Tiranga on my back. Not bad for an engineer, I guess!”

Tarun's journey is a testament to the power of perseverance and the impact of the right support system. His success is a moment of pride not just for BMU, but for all those who believe in chasing their dreams—wherever they may lead.



Student Enrollment Growth



“ I remember quite warmly working alongside Gerry George and Akshay Munjal, crafting handwritten values that would eventually evolve into three I principles, Inquire, Inspire, and Impact.



“These principles became foundational to everything Imperial College London did as the academic mentor of this institution. Over the past decade, BMU has indeed created lasting impact, building an institution that nurtures future leaders and entrepreneurs deeply connected to innovation and committing to driving positive change in the world. I wish them continued growth, success and impact for many more decades to come.”

PROF. SANKALP CHATURVEDI
ASSOCIATE DEAN FOR EQUITY, DIVERSITY & INCLUSION (EDI), DEPARTMENT OF MANAGEMENT AND ENTREPRENEURSHIP - BUSINESS SCHOOL, IMPERIAL COLLEGE LONDON

Mentoring Philosophy

We take pride in our Mentoring Programme, which embodies the University's core value of pastoral care. Dedicated to supporting the holistic well-being and personal development of our students, the programme offers comprehensive emotional, social, and psychological support. Faculty mentors play a pivotal and multifaceted role in overseeing and guiding the overall growth and mental well-being of their mentees.



1. Guidance beyond Academics

Acting in loco parentis, mentors are responsible for monitoring their mentees' attendance, academic progress, and participation in co-curricular activities, regardless of the mentee's discipline. Detailed information about mentees, including attendance records, academic performance, and contact details for both the mentee and their parents, is accessible through the mentor's portal.

2. Pastoral Care

The mentor-mentee relationship is founded on trust, respect, and care. Mentors are expected to foster an open and inclusive environment where mentees feel comfortable discussing personal and academic challenges. Special attention is given to mentees under the Financial Aid scheme and those from diverse linguistic, socio-cultural, economic, and geographical backgrounds.



“ Shayeqa Ma’am wasn’t just a guide but a steady hand in chaos. She saw potential in me when I doubted myself, pushing me beyond my limits. Her wisdom, combined with my journey through law school, helped me gain confidence and clarity. She challenged me to think critically, speak fearlessly, and grow beyond what I imagined.”

YUKTI TANEJA, BA LLB (H.) (2024-29)

“ The most valuable things I received at BMU was the opportunity and the space to experiment, make mistakes and get back up. From the joy of participating in tech competitions like hackathons to the bliss of performing in the university’s theatre, every experience added a new layer to my confidence.”

BHAVYA RANA, B.TECH (2024-28)



“ The ability to understand the world through different viewpoints,

and from different perspectives, is the true test of maturity. If this education has helped show the way towards that maturity, then it will remain relevant for character building.”

JUSTICE S. MURLIDHAR
FORMER CHIEF JUSTICE OF THE HIGH COURT OF
ORISSA, shared his insights during the Convocation
Address for the Class of 2024.





Picture Credits: Ms. Naina Sethi
Deputy Manager - HR, BMU

Access to Education & Social Impact

BMU is committed to fostering access to education and social impact by ensuring financial support, promoting diversity, and enhancing infrastructure. Through scholarships, the university empowers first-generation learners and students from diverse socio-economic backgrounds. A strong focus on inclusion and state-of-the-art facilities further strengthens its mission of making equitable and high-quality education accessible to all. Our journey

over the past decade reflects our commitment to higher education as a public good and the complexities of building a multidisciplinary institution. This period has been one of learning, adaptation, and growth—distinct from establishing a single-discipline college or a business enterprise. BMU's trajectory showcases its evolving understanding of academic excellence, innovation, and societal impact, shaping it into a dynamic and future-focused institution.

Going beyond just setting up a quality University, BMU has approached its mission along the lines of

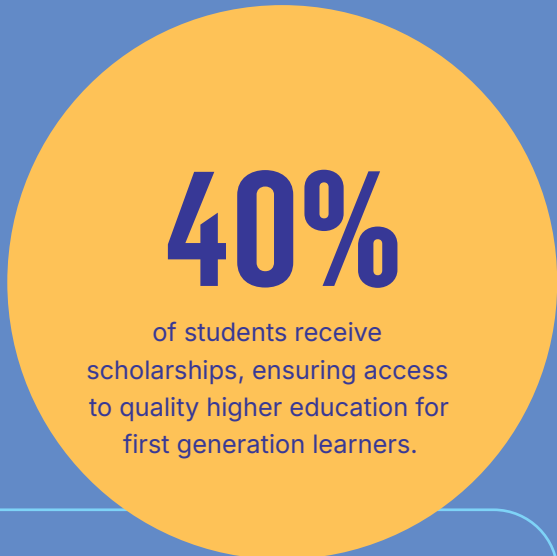
Nation building and social transformation.

Accelerating research and development.

Extending access to quality higher education at social and economic margins.

Establishing higher education innovations.





SCHOLARSHIP SUPPORT

842

students are currently on scholarships.

205 of 512

graduates studied with scholarship support.

54%

of 2024 admissions receiving Financial Aid are from families earning < ₹8 LPA.

The total rupee value of scholarships has gone up from ₹1.64 crores in 2014 to

₹15.14 CR in 2024.



2015 | Launched specialisation degrees with KPMG and IBM.

Swarna Gondla B.Com (Hons) (2022-25)

Swarna, a bright student from Hyderabad, always dreamt of higher education, but her family's financial struggles stood in the way. Her father, a plumber and the sole earner for a family of five, could barely manage their expenses. He wanted Swarna to attend a local college, even if it meant compromising her aspirations.

However, Swarna's elder brother believed in her potential and convinced their parents to let her pursue her dreams. A scholarship from BMU turned the impossible into reality, allowing her to study B.Com in BMU with access to world-class faculty and facilities.

For Swarna, it was a **'dream come true.'** Her journey has not only made her family proud but also given her the confidence to dream even bigger and work towards a brighter future.



Astha Bisht BA Liberal Arts, (2023-27)

Astha is a **national level Table Tennis player** who wants to serve her country as bravely as her father did. Her father was one of the valiant commandos on duty to save civilians from Taj Hotel during terrorist attack of 9/11. Injuries from the rescue mission has made him bedridden, but he has always encouraged Astha to go after her dreams and give her best. Her elder sister had to drop out of her studies as the family couldn't afford to pay the fees, since the whole family survives on pension. Astha is pursuing her undergraduate degree from BMU with full financial aid and support from the university.

Diversity and Inclusion

32%

of students are women.

Women enrollment increased from 12% in 2014 to

33%

in 2024.

40%

of faculty and staff are women.

Financial Support and Inclusion Cell (FSIC) was established in 2023 to support students from financially marginalised backgrounds.

Diversity, Equity, and Inclusion Cell (DEI) was established in 2024.





Dr. Mashelkar
addressing the students
at BMU campus in
November 2014.

“ Have been a great admirer of the rapid rise of BML Munjal University, which has become an exemplar in balancing excellence and relevance by seamlessly integrating education, research, innovation and entrepreneurship.”

DR. RAGHUNATH ANANT MASHELKAR
ADVISORY BOARD, BMU; CHANCELLOR, ACSIR; FORMER DIRECTOR GENERAL, CSIR

Catalysing Change – Research & Development

BMU's commitment to research goes beyond imparting knowledge—it actively generates solutions to critical societal challenges. Since launching its PhD programme in its second year, BMU has expanded its research ecosystem, growing from just 2 scholars to 63 across Engineering, Management, and Law. With over ₹30 Cr invested in research infrastructure, seed grants, and fellowships, the university fosters

pioneering work in clean energy, AI, health, and law. Its Centres of Excellence drive cutting-edge studies in automation, computational sciences, sustainability, and renewable energy. Notably, 44% of BMU's research publications are featured in the top 25% of academic journals globally, reinforcing its position as a hub for high-impact, high-quality research.

Hearing from the Experts

"BMU plays a pivotal role in fostering interdisciplinary research, where diverse fields converge to address complex problems. By providing space for collaboration across disciplines such as applied mathematics, computational sciences, and engineering, BMU creates opportunities for groundbreaking advancements.

"For example, research on fluid flow, heat, and mass transfer now integrates machine learning techniques like Physics-Informed Neural Networks (PINNs). This fusion of computational intelligence, mathematical modelling, and physics-based principles enables more accurate and efficient solutions to real-world engineering challenges.

By promoting interdisciplinary studies, BMU enhances knowledge creation and drives innovation with societal impact. Whether in biomedical advancements, climate change, cooling device design, or sustainable energy solutions, a collaborative research environment ensures that insights from one discipline enrich another, paving the way for technological and scientific breakthroughs. Such an ecosystem requires institutional support, including high-performance computing facilities, funding, and academic flexibility, enabling BMU's faculty and students to transcend traditional boundaries.

“ Ultimately, interdisciplinary research at BMU fosters intellectual curiosity, problem-solving, and a deeper understanding of complex systems, benefiting academia, society, and industry.”

DR. ZIYA UDDIN,
PROFESSOR, SCHOOL OF ENGINEERING AND
TECHNOLOGY, DEAN OF STUDENT WELFARE



“ At BMU, our vision is to seek advancement and dissemination of practically-oriented knowledge. At the same time, we treat our intellectual productivity as a public good and believe in sharing our research with interested stakeholders to generate maximum social benefit. Our faculties and students regularly participate in and contribute to various areas of public policy through their popular writings in reputed national magazines, newspapers, and blogs.”

DR. AKHILENDRA PRATAP SINGH
ASSISTANT PROFESSOR, SCHOOL OF LAW, BMU

“ Through interdisciplinary pedagogy and immersive learning, the School of Liberal Studies at BMU prepares students to engage in research by being culturally and politically sensitive, empathic and critical thinkers. This is to encourage them to become engaged inhabitants of a world community that is beautifully diverse but is simultaneously beset with challenges of an intersectional nature, where at stake are the questions of human dignity, equality and justice.”

DR. NAZIA AMIN
ASSISTANT PROFESSOR, SCHOOL OF LIBERAL STUDIES, BMU

Dr Don Norman, world-renowned author and Founding Director of The Design Lab at UC San Diego, interacting with students, when he visited BMU campus in 2024.



“ BML Munjal University ignited my passion for research, offering a vibrant ecosystem of innovation and discovery. Choosing this institution for my PhD was a transformative leap that reshaped my academic and personal journey.

“The rigorous curriculum and visionary mentorship challenged me to push boundaries and think critically. Each challenge turned into an opportunity, refining my skills and deepening my understanding of my field.

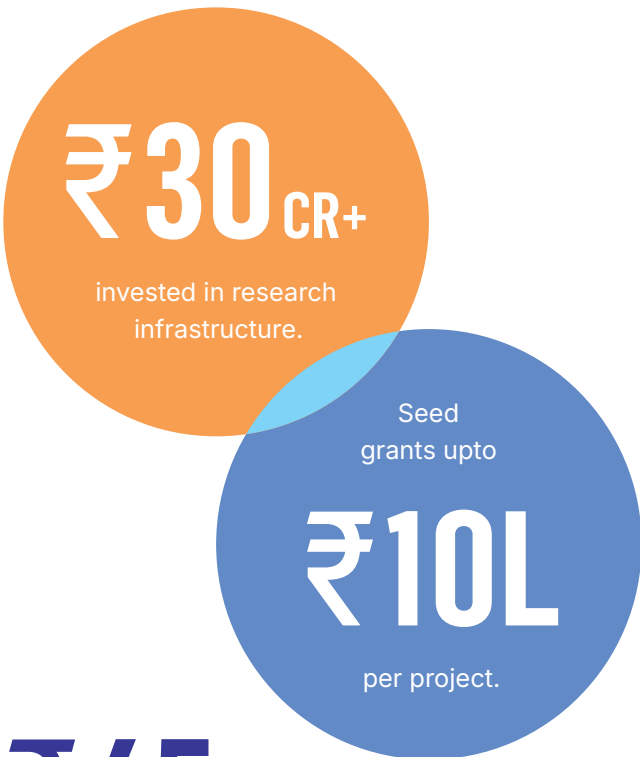
“My time here not only propelled my career forward but also enriched my life with resilience and purpose. At BMU, I discovered that with dedication and curiosity, even the loftiest dreams are within reach.”

DR. ATUL MISHRA, PHD SCHOLAR FROM 2017 TO 2022.
DR MISHRA IS NOW A FACULTY AT BMU.

“ I chose to pursue my PhD at BML Munjal University because of its interdisciplinary research focus, strong mentorship, and access to cutting-edge resources. Unlike traditional universities, BMU provided a collaborative environment where industry and academia intersect, enriching my research experience. The flexibility to shape my research direction, along with continuous faculty support, allowed me to explore innovative solutions in my field. BMU’s focus on experiential learning and real-world relevance made my PhD journey truly rewarding.”

DR. NISHTHA PHUTELA, PHD SCHOLAR FROM 2017 TO 2022.
DR PHUTELA IS NOW A FACULTY AT BMU.

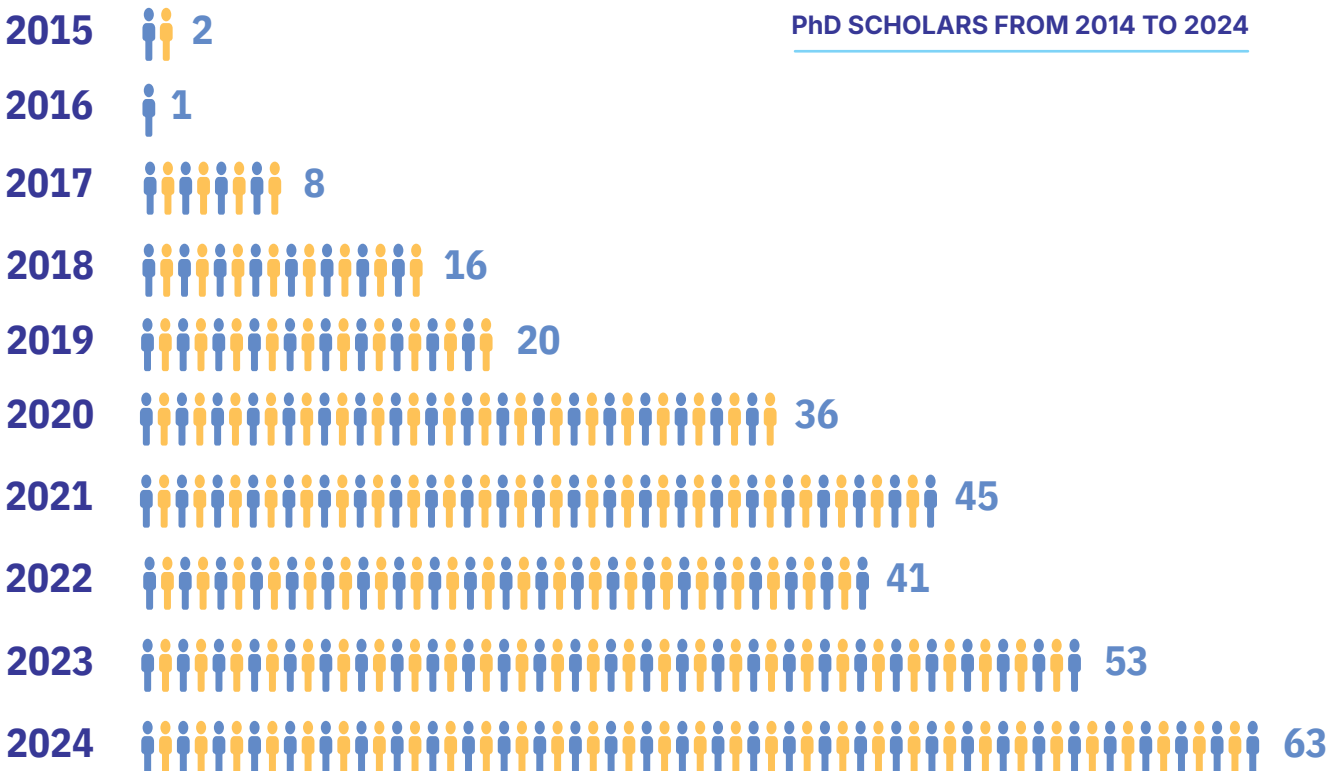
Investment in Research



₹45 CR

in research fellowships disbursed.

PhD Programmes



Centres of Excellence

Centre for Automation, Robotics

& Mechatronics: established in 2016 through a collaboration with Siemens India to provide training in automation, mechatronics, robotics, hydraulics, and pneumatics.

Centre for Advanced Materials

and Devices: promotes cross-disciplinary translational research through advanced analytical and characterization tools.

Centre for Sustainability Research & Advocacy:

committed to advancement and contributing to sustainability through research, advocacy, & community engagement.

Centre for Computational & Complexity

Sciences: fosters research in cutting-edge areas of complex systems, facilitating cross disciplinary research in non-linear and adaptive systems.

Centre for Law & Policy: Driving discourse on governance, legal reforms, and policymaking.

Centre for Solar & Renewable Energy:

Developing green technologies and promoting sustainable practices.

These Centres of Excellence have led to **patents, industry partnerships, and groundbreaking research**, reinforcing BMU's status as a hub for cutting-edge learning and application.

INDUSTRY PARTNERSHIPS



2017 Inaugurated Siemens Centre of Excellence and Intel Laboratory.



Research in Numbers

97

total patents filed /
published.

06+

research centres.

₹702L

external funding.

₹243L

internal funding.

35

junior and senior
research fellows.

₹70L

research incentive awards.

44%

of BMU publications
featured in

top 25%

academic journals globally.

Research Focus Areas



By focusing research on **clean energy, water, agriculture, health, AI, and law**, BMU actively supports **sustainability** and **societal well-being**. Innovations in **renewable energy** and **water management** promote environmental conservation, while advancements in **agriculture** and **health** drive sustainable food systems and public welfare. Research in **AI** and **law** ensures ethical governance and technological solutions for a sustainable future. Through these efforts, BMU is fostering long-term **economic, social, and environmental resilience**.



Entrepreneurial Ecosystem

BMU is shaping the next generation of entrepreneurs and innovators by fostering a dynamic entrepreneurial ecosystem for both faculty and students. Through specialised programmes, mentorship, and industry collaborations, the university nurtures innovation,

resilience, and ethical leadership. By equipping aspiring entrepreneurs with the skills to build ventures that drive economic growth and social impact, BMU is playing a pivotal role in empowering changemakers and transforming industries.



ACIC-BMU | Propel: The Incubation Hub

ACIC-BMU Foundation (ACIC-BMU) was set up by BMU along with the support of Atal Innovation Mission (AIM), NITI Aayog to promote and support innovation and entrepreneurship. ACIC and Propel offer a comprehensive ecosystem that includes incubation support, mentorship, industry connections, and funding opportunities. Through initiatives like the Propel Pitchfest, the foundation provides a platform for start-ups at various stages to present their ideas to potential investors and partners. By nurturing innovative and ethical entrepreneurs, ACIC-BMU aims to create ventures that generate economic value and have a positive societal impact.

500+

jobs created by start-ups
in the market.

ACIC-BMU PROPEL IN 5 YEARS	2024
Start-ups under incubation	72
Start-ups with women founders	42%
Start-ups with ARR > ₹2.5 Mn	11
Start-ups funded externally	7
Annual revenue of start-ups	₹40 cr
Total direct funding provided	₹1.5 cr
External funds raised	₹65 cr
Valuation	₹350 cr

Institute of Innovation and Entrepreneurship (I²E): The Learning Hub

I²E, BMU's nodal centre for innovation and entrepreneurship, is guided by a steering committee of industry leaders and global academics. It supports curriculum, innovation, and entrepreneurship activities, strengthening BMU's entrepreneurial learning with new electives like Legal Aspects of Venturing and Silicon Valley Pinnacle. The doctoral programme now includes industry scholars and a compulsory Foundational Theories in Entrepreneurship course. Innovation Days showcased 100+ prototypes, and outreach efforts introduced Design Thinking to 1,000+ students across 50 schools. I²E also drives sponsored research and industry consulting in entrepreneurship and innovation.

The Chair Professorship was established in 2020 in partnership with Border Mission Limited.



Mr. George Goh Ching Wah, Chairman, Border Mission Limited, Singapore, interacting with students about their entrepreneurship ideas while visiting BMU in 2024.

I ² E-BMU PROPEL IN 5 YEARS	2024
Students learning Entrepreneurship	1,450
Students pursuing specialisation in Entrepreneurship	65
Doctoral students	3



Started PhD programmes. **2017**

“ I would like to thank BML Munjal University for bringing this initiative [Women in Leadership Programme] to life. As I echo the sentiments of powerful women, I emphasise the need to empower ourselves with the right tools to reach much greater heights. It is time we recognise the inherent beauty and strength that lies in being a woman and to embrace it fully. Let us strive to break barriers, shatter stereotypes and emerge as

**leaders who
empower the
generations to
come.”**

MS. CHHAVI RAJAWAT
FORMER SARPANCH, SODA, RAJASTHAN
speaking at Women in Leadership Convocation in 2023.



BML MUNJAL
UNIVERSITY™
A HERO GROUP INITIATIVE

WIL

Strengthening Rural Communities: Impact at Grassroot Level



Mera Business Programme

ACIC's Mera Business Programme, started in 2022, has empowered nearly 300 rural women, with approximately 60% of them establishing micro-businesses, thereby enhancing their financial independence and social standing. Their monthly revenue range is ₹7,000-20,000. For all the participants, this was the first opportunity to seek out and get professional and systematic support for their enterprise.



IN 2 YEARS	2024
Micro-entrepreneurs trained	5 cohorts – 300+ women
No of micro-businesses covered	120
Revenue range (per month)	₹7,000-20,000
Training funded externally	35%



Yuva Udyami Programme

It aims to empower polytechnic students with the skills and resources needed to launch successful ventures. The programme offers entrepreneurship and business management training, alongside technical skill development in component manufacturing, service, and innovation. Students gain access to industry networks, mentorship, and funding opportunities, bridging the gap between academia and industry.



Sankalp

Sankalp, BMU's flagship social entrepreneurship initiative, engages MBA students in real-world rural enterprise development, fostering ethical leadership, innovation, and social impact. It requires students to go beyond classrooms and solve real-life societal and economic problems in the villages around the University. Recognised among the top 26 global initiatives in AACSB's 'Innovations That Inspire' in 2024, Sankalp reflects BMU's commitment to impact-driven education. A proposed revamp will strengthen its alignment with the Mera Business Programme to enhance practical learning.

2017

Launched Women-in-Leadership and Executive MBA.



“In spite of all the problems and all failures, all the learnings, if you continue to work hard, with passion, perseverance and ability to pivot, and learn from the failures, there will always be **light at the end of the tunnel.”**

MR. SIDDHARTH SHAH
FOUNDER, PHARMEASY, at the
Leadership Summit of 2023.



2017

Setting up of SHELL Learning Centre, 3D Printing Laboratory, Hero MotoCorp Automotive Workshop, and Center for Advanced Material and Devices.

From Ideas to Impact: Start-ups Leading the Way

These ventures, either incubated at BMU or founded by its enterprising alumni, exemplify the university's commitment to fostering innovation with purpose. With a strong focus on cleantech, mobility, and spacetech, these start-ups are not only disrupting industries but also addressing some of the most critical sustainability and technology challenges of our time.

Batx Energies



BATX Energies, a BMU-incubated start-up, is revolutionising lithium-ion battery recycling by extracting and refining critical materials for a sustainable, circular economy. Their innovative model reduces battery waste and reliance on virgin materials, making energy storage greener.

With over ₹60 Cr in funding and a valuation of ₹350+ Cr, BATX Energies is rapidly scaling as a key player in India's green energy sector. Forbes recognised it among India's top 200 start-ups with 'Global Business Potential,' highlighting its growing impact. From incubator to industry leader, BATX Energies is powering a sustainable future.

VayuGuard



Vayuguard, another BMU-incubated start-up, is transforming air purification with its patented hybrid air cleaning and sterilising technology, surpassing conventional systems.

Backed by Startup India seed funding, Vayuguard refined its innovation and gained industry recognition, winning the Green Tech Accelerator by SIDBI, FITT, and ReNew. As SDG Entrepreneurs of India (AIM, NITI Aayog), they are driving a movement for cleaner air and public health.

From concept to award-winning solution, Vayuguard is shaping the future of clean air in India, one breath at a time.

Fery



Fery, a start-up by our MBA alumni, is revolutionising mobility with a women-driven bike taxi service, ensuring safe, reliable transport for women commuters. More than a service, it's a movement empowering women on the roads.

Supported by Startup India and HDFC Bank, Fery has scaled operations while creating jobs for women riders. Its impact earned prestigious accolades, including the Shoonya Inclusion and Empowerment Champion award and recognition from NITI Aayog's 'Her and Now' initiative.

By merging mobility with empowerment, Fery is proving that when women take the wheel, they drive society forward.

“**ACIC-BMU Foundation has been a pillar of support in my entrepreneurial journey, providing invaluable mentorship, networking opportunities, and funding under SISFS. Under the guidance of Davinder Sir [Prof. Davinder Singh, CEO, ACIC-BMU Foundation], I received the initial push and motivation needed to build Fery. The University's entrepreneurial ecosystem, with its encouraging professors and start-up-friendly initiatives, played a crucial role in shaping my path as an entrepreneur. I am grateful for ACIC-BMU's trust and unwavering support, which has been instrumental in Fery's growth.**”

MR. AJAY KUMAR, FOUNDER AND CEO, FERY; MBA ALUMNI (2021-23)

Ethereal X



Ethereal, a start-up by our B.Tech alumni, Manu Nair, is developing reusable rockets. Their innovation lowers space transportation costs, boosts scientific progress, and helps us get closer to becoming a spacefaring civilisation.

What began as an ambitious dream has now gained significant support, raising over ₹40 crore in funding to grow their technology and expand their mission. Their impressive work has earned them a spot among just six Indian start-ups chosen to pitch their ideas to investors in Silicon Valley, placing India firmly on the global map for space innovation.

By making space travel more affordable and accessible, this start-up is not just creating rockets—they are opening up new possibilities for humanity's future in space. With every successful launch, they're bringing us closer to a world where space is not just for astronauts but for everyone.



Alien Innovation



This innovative start-up has developed the world's first compact device to empower the visually impaired, enhancing their mobility with advanced sensors that detect multi-directional obstacles using vibration technology. This device allows users to navigate their environment safely and independently.

Recognised globally, the start-up won the 2023 Generation Unlimited ImaGen Ventures Youth Challenge (UNICEF) for its life-changing impact. This breakthrough brings us closer to a world where accessibility and independence are within everyone's reach.

“ BMU's focus on experiential learning has been pivotal in shaping my entrepreneurial journey. The ecosystem at BMU, including the ACIC-BMU incubation centre, resources, and network, SISFS (seed fund) has provided the right support to turn ideas into impactful solutions.”

MR. AKSHAY KUMAR
CEO & CO-FOUNDER, EMIANT INNOVATIONS PVT. LTD.,
B.TECH ALUMNI (2014-18)

2018

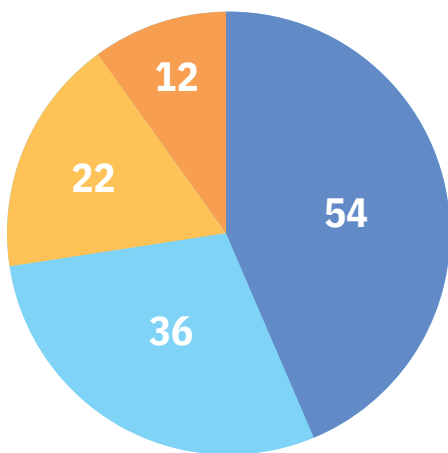
Partnered with University of California, Berkeley, Carleton University, Kent University, Aston University, North South University, University of Michigan-Flint, University of North Georgia, Saint Mary's College of California.

The Pillars of BMU's Education: Faculty and Leadership

BMU's commitment to academic excellence and industry relevance is reflected in its growing faculty strength and expertise. With a significant rise in faculty from international institutions and premium academic backgrounds, the university ensures global exposure and high-quality education for

students. Additionally, a strong focus on industry experience enhances practical learning and research applications. This dynamic faculty composition strengthens BMU's role as a hub for cutting-edge education, innovation, and real-world impact.

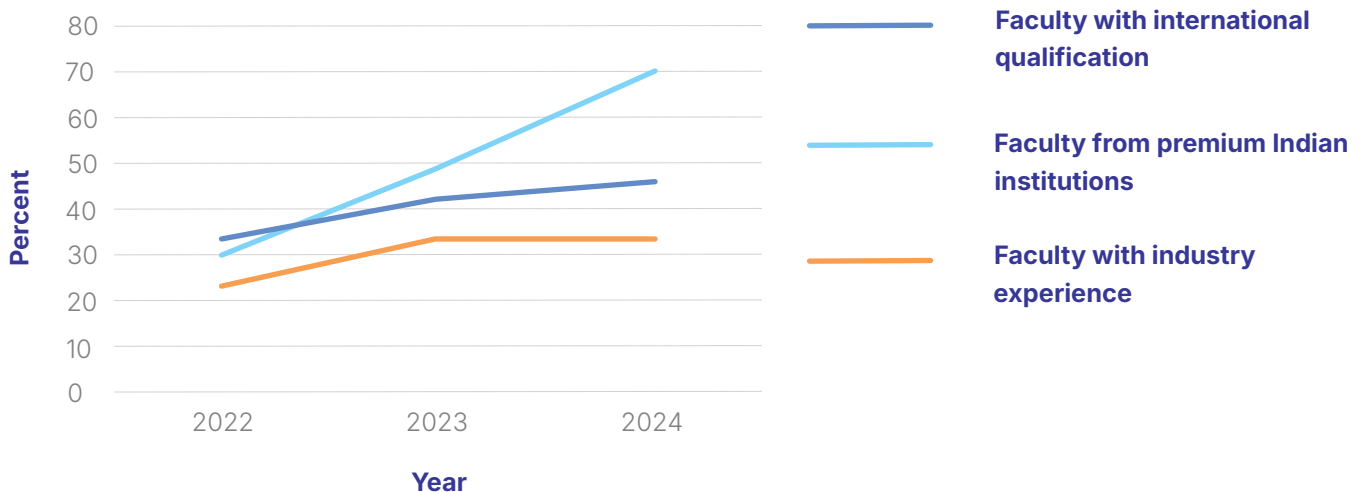
CURRENT FACULTY STRENGTH: 124



- Engineering and Technology
- Management
- Law
- Liberal Studies

International Exposure	Faculty
International education	15%
International terminal degree	25%
International training/project exposure	25%
Faculty from leading Indian institutions	25%
Industry exposure	40%

FACULTY PROFILE 2022 – 2024



Our faculty bring expertise from renowned academic institutions worldwide.

NATIONAL INSTITUTES

- | | | |
|---------------|---------------------|------------------------|
| IIT | NALSAR | DTU |
| IIM | MDI, Gurugram | Delhi University |
| IIIT | LBSIM | BITS, Pilani |
| NIT | JNU, Delhi | Azim Premji University |
| TIET, Patiala | Jadavpur University | University Of Calcutta |
| NLU | IRMA, Anand | |
| NLS | FMS, Delhi | |

INTERNATIONAL INSTITUTES

- | | | |
|-----------------------------------|------------------------------------|---------------------------------------|
| University of Warwick, UK | Leiden Univ, Netherlands | Queen Mary University of London |
| National University of Singapore | University College London | Faculty of Law, Univ of Cambridge, UK |
| University of Bristol, UK | Kansas University, USA | University of Texas, USA |
| University of Edinburgh (UoE), UK | University of Melbourne, Australia | |

2018 Partnered with Adger University, Norway.

2019 Launched School of Law and Economics Programme.

Where the Best Meet: Thought Leadership

Over the past decade, BMU has established itself as a hub for thought leadership, fostering meaningful dialogue and innovation across industries, academia, and policymaking. Through flagship events, distinguished lectures, and active participation in significant policy and academic forums, BMU has carved a distinct space in the higher education landscape.

The university's multidisciplinary environment provides a platform for discourse, collaboration, and exposure across disciplines, giving it a strategic advantage over single-discipline institutions. Faculty members are regularly invited to contribute to policy discussions, while BMU's public events attract renowned speakers from diverse fields, enriching conversations on critical global challenges.

Internally, BMU has created impactful spaces for knowledge generation through events like the **Women in Leadership Conference, TEDxBMU, Leadership Summit, Technical Conclave, Hackathons**, and the **Sustainable Technology Advancement Conclave**. These engagements not only inspire students and faculty but also drive innovation with real-world applications—such as hackathons focused on **mental health surveillance, legal record management, and healthcare optimisation**.

Externally, BMU leverages its expertise to shape public discourse, creating opportunities for citizens to engage with pressing issues through high-impact forums. By bridging academia, industry, and policy, BMU continues to equip students with real-world insights while solidifying its position as a leader in thought leadership and innovation.

Shaping Conversations That Matter

Our signature events serve as dynamic platforms for academic discourse, industry collaboration, and leadership development. These events not only bring

global expertise to campus but also shape critical discussions that influence policy, innovation, and education.



Leadership Summit

A premier gathering of thought leaders, industry experts, and policymakers discussing contemporary leadership challenges and forging solutions for a rapidly evolving world.

Students at Leadership Summit 2024.



Women in Leadership Conference

A powerful platform that celebrates and empowers women leaders, fosters gender inclusivity, and inspires the next generation of changemakers.

Second Edition of WIL Conference.

Law Conclave

A vibrant forum where legal professionals, policymakers, and academicians address pressing issues in law, governance, and justice, influencing legal discourse and policy reform.

Prof. Sudhir Krishnaswamy, VC, National Law School of India University, delivering lecture at Law Conclave 2022.



Tech Conclave

A convergence of industry and academia that showcases emerging trends in technology, digital transformation, and AI-driven advancements, positioning BMU at the forefront of tech-driven education.

Eminent Panellists at Tech Conclave 2024.

2021

Incorporation of BMU into Delhi Science and Technology Mega Cluster.



SoLS Conversations

A deep, interdisciplinary dialogue led by the School of Liberal Studies (SoLS), tackling global issues spanning economics, society, culture, politics, and psychology. The platform brings together academicians, authors, researchers, and universities to shape perspectives on today's most pressing challenges.

Inaugural SoLS Conversations 2023.

BML Munjal Memorial Lecture

The BML Munjal Memorial Lecture is a distinguished series that brings together visionaries to share transformative ideas, reinforcing BMU's legacy of academic excellence and thought leadership.

The Inaugural Lecture featured Dr. Jeffrey Sachs, renowned global economist, who emphasised the balance of public and private institutions, market mechanisms, and entrepreneurship in development. Chaired by Prof. Deepak Nayyar, the lecture focused on India's economic and technological transformation, addressing global economic shifts, climate resilience, and industrial strategy.



“**Development is a balance of public and private institutions, market mechanisms, and individual entrepreneurship, all working together.**”

DR. JEFFREY SACHS
PROFESSOR AND DIRECTOR,
CENTRE FOR SUSTAINABLE DEVELOPMENT,
COLUMBIA UNIVERSITY; PRESIDENT OF THE UN
SUSTAINABLE DEVELOPMENT SOLUTIONS NETWORK.



Interdisciplinary Learning

From its inception, BMU has been committed to fostering interdisciplinary learning, equipping students with the diverse knowledge needed to navigate real-world challenges. As a multi-disciplinary institution, BMU enables students to integrate perspectives from various fields through **interdisciplinary minors, cross-listed courses, and collaborative research.**

Engineering students gain insights into **law, philosophy, and economics**, enhancing their ability to address ethical and societal dimensions of technology. Management students develop a broader worldview by studying **sociology and philosophy**, while law students engage with **economics, political science, and technology-driven legal frameworks.** The **Liberal Studies foundation course**, drawing faculty from across disciplines, ensures students develop critical thinking and adaptability.

Additionally, the **School of Law extends its expertise beyond its own students**, offering courses such as **Right to Information, International Human Rights Law, Company Law, AI and the Law, and Identity and the Law** to those in other disciplines. This cross-pollination of knowledge ensures that BMU graduates are not just specialists in their fields but well-rounded professionals who can think critically, navigate complexity, and drive meaningful impact in an interconnected world. As BMU advances, the next step is deeper collaboration—not just intersecting courses, but **co-creating them**, reinforcing its position as a leader in interdisciplinary education.

Agrima Soni, B.Tech (2015-19)

Agrima Soni, raised in Bhiwadi, Rajasthan and now settled in the US, is the first engineer in her family. In her family, women have largely been homemakers. She grew up fascinated by modelling and fitness and was also a straight-A high scorer. At BMU, she found an education that not only equipped her as an able and skilled engineer but also gave her a holistic education wherein she could develop skills needed to pursue an alternate career in modelling and styling.

Through a curriculum that exposes engineering students to world civilisation, literature and management courses, Agrima is now using her education as a Senior Education Counsellor and modelling for some of the top fashion brands. She was one of the winners at Miss Rajasthan. Encouraged and supported by the faculty at BMU, Agrima found the courage to go for all the offbeat interests along with also acing as an engineering student.

She is the first woman in her family to work in the corporate world and also pursue fashion.



A Legacy of Inspiration: Leaders Who Have Shaped BMU's Journey

We have been privileged to host some of the world's most renowned leaders, innovators, and changemakers, who have not only delivered lectures but also engaged deeply with students and faculty,

leaving a lasting impact. These visits reflect BMU's commitment to experiential learning, where students gain direct exposure to real-world challenges and pioneering solutions.

NOTABLE VISIONARIES AT BMU

- Mr. Kailash Satyarthi - Nobel Laureate, Child Rights Activist
- Mr. Kumar Mangalam Birla - Chairman, Aditya Birla Group
- Mr. T V Narendran - MD, Tata Steel
- Mr. Narayana Murthy - Co-founder, Infosys
- Dr. K. Radhakrishnan - Former Chairman, ISRO
- Mr. Amitabh Kant - Former CEO, NITI Aayog
- Dr. Arun Maira - Economist and Former Member of the Planning Commission
- General Bikram Singh - Former Chief of Army Staff, Indian Army
- Padma Shri Kiran Karnik - Chairman, IIT-Delhi & Former President, NASSCOM
- Dr. Rima Ghose Chowdhury - Executive Vice-President & Chief Human Resource Officer, Datamatics India
- Ms. Kirti Gupta - Sales Director-South Asia, Boeing
- Mr. Mike Clarke - Former COO & CHRO Hero Motocorp
- Dr. Bhaskar Roy - Global Operating Leader Data Tech - AI, Genpact
- Ms. Chhavi Chhibber - Director, Bain & Co.
- Dr. Sangia Reddy - Joint MD, Apollo Hospitals
- Dr. Kavita Rao - Vice President (Sr. Partner), Aditya Birla Capital
- Mr. Rajeev Chaba - President and Managing Director, MG Motors

These leaders have not just visited, they have shaped BMU's identity as an institution that thrives on intellectual curiosity, critical thinking, and hands-on learning.

Institution-Building Through Collective Effort

The journey of institution-building is not an isolated endeavour, it is a collective effort fuelled by visionary leadership, dedicated faculty, and an engaged student community. The impact of these thought leaders extends beyond the stage, reshaping curriculums, inspiring research collaborations, and strengthening BMU's global reputation.

By bringing renowned thought leaders and professionals to campus, we ensure that its students and faculty remain at the cutting edge of knowledge and innovation. These interactions have laid the foundation for a learning ecosystem where education is not confined to textbooks but is enriched through real-world wisdom, cross-sector collaborations, and forward-thinking initiatives.



Industry Alliances

Our strategic alliances across industry, academia, and civil society have significantly enriched its teaching and research ecosystem, reinforcing a deep commitment to real-world impact and societal transformation. Through robust collaborations, BMU connects companies with expert faculty and talented students, offering access to emerging technologies, research-driven insights, and tailored solutions to industry challenges. Partnerships with leading organisations such as HDFC Bank, Lead Angels, Power2SME, SheHeroes, and JOSH Talks reflect BMU's focus on sustainable innovation, smart manufacturing, and inclusive entrepreneurship. By integrating global perspectives, industry expertise, and community engagement, BMU cultivates a dynamic learning environment—one where education extends beyond the classroom and students emerge as future-ready innovators, leaders, and changemakers.



Academic Alliances

Embodying the mission of 'From Here to the World', BMU was founded in collaboration with Imperial College London, a partnership that continues to shape its curriculum, global exposure, and academic outlook. Over the years, BMU has built a growing network of academic and research collaborations with leading institutions worldwide. What truly sets us apart is our ability to bridge academia and real-world practice through meaningful partnerships. In India, BMU has joined hands with prominent organisations such as NITI Aayog, the All India Management Association, National Law University Delhi, the Indian Academy of Management, and Bodh Shiksha Samiti—driving impactful research, policy dialogue, and knowledge exchange.



2021 Launched Institute of Innovation and Entrepreneurship.

Laying the Foundation

Lifelong learning is essential in today's dynamic world, where evolving industries demand continuous skill enhancement. BMU has been at the forefront of continuing education, empowering working professionals and graduates with specialised programmes that foster career growth, leadership development, and industry relevance. Through its tailored executive education initiatives, BMU has enabled **295 professionals** from diverse sectors—including education, banking, pharmaceuticals, and energy—to enhance their expertise and leadership capabilities.



Launched Micro Enterprise Training to empower women. **2022**

School of Management awarded Diamond Rating by QS I Gauge. **2022**

“ At BMU, we believe that empowerment is the cornerstone of progress.

By retaining women in the workforce and providing unwavering support, we unlock the potential for exponential growth. Let’s embrace diversity, amplify voices, and dream beyond boundaries—for when women dream more, our GDP soars higher. We recognise the profound impact of women leaders and strive to equip talented female leaders with the skills and support necessary for success in their professional journeys.”

MS. SWATI MUNJAL, PRESIDENT, BMU



Bridging Academia and Industry: Empowering Professionals Through Executive Education

The Centre of Continuing Education (CCE) at BMU offers dynamic executive education programmes designed to help professionals upskill and adapt to evolving industry demands. These programmes are tailored for individuals across various sectors—including small, medium, large, and blue-chip companies—focusing on competencies that are in high demand.

Key Highlights:

Industry-Relevant Learning: Programmes are developed in collaboration with experienced faculty and industry professionals, ensuring a curriculum that addresses current market needs.

Customised Solutions: The CCE offers tailored programmes that align with organisational goals, incorporating real-world case studies and organisational use cases to enhance relevance and impact.

Impact and Reach: The centre has impacted over 500 learners, with flagship programmes like the Executive MBA and Women in Leadership.

Programme Delivery: Courses utilise multimodal learning resources, real-time feedback, and continuous assessment to ensure effective learning outcomes.

EXECUTIVE EDUCATION PROGRAMMES	2014	2019	2024
Number of participants	30	51	295
New courses added	<ul style="list-style-type: none"> MBA (Executive Programme) 	<ul style="list-style-type: none"> Women in Leadership Programme Certificate programme on Leadership Skills Development for Hero Fincorp 	<ul style="list-style-type: none"> Ascent Leadership Programme for School Teachers Non-certificate training for LIC Bharat Banking Programme for Axis Bank



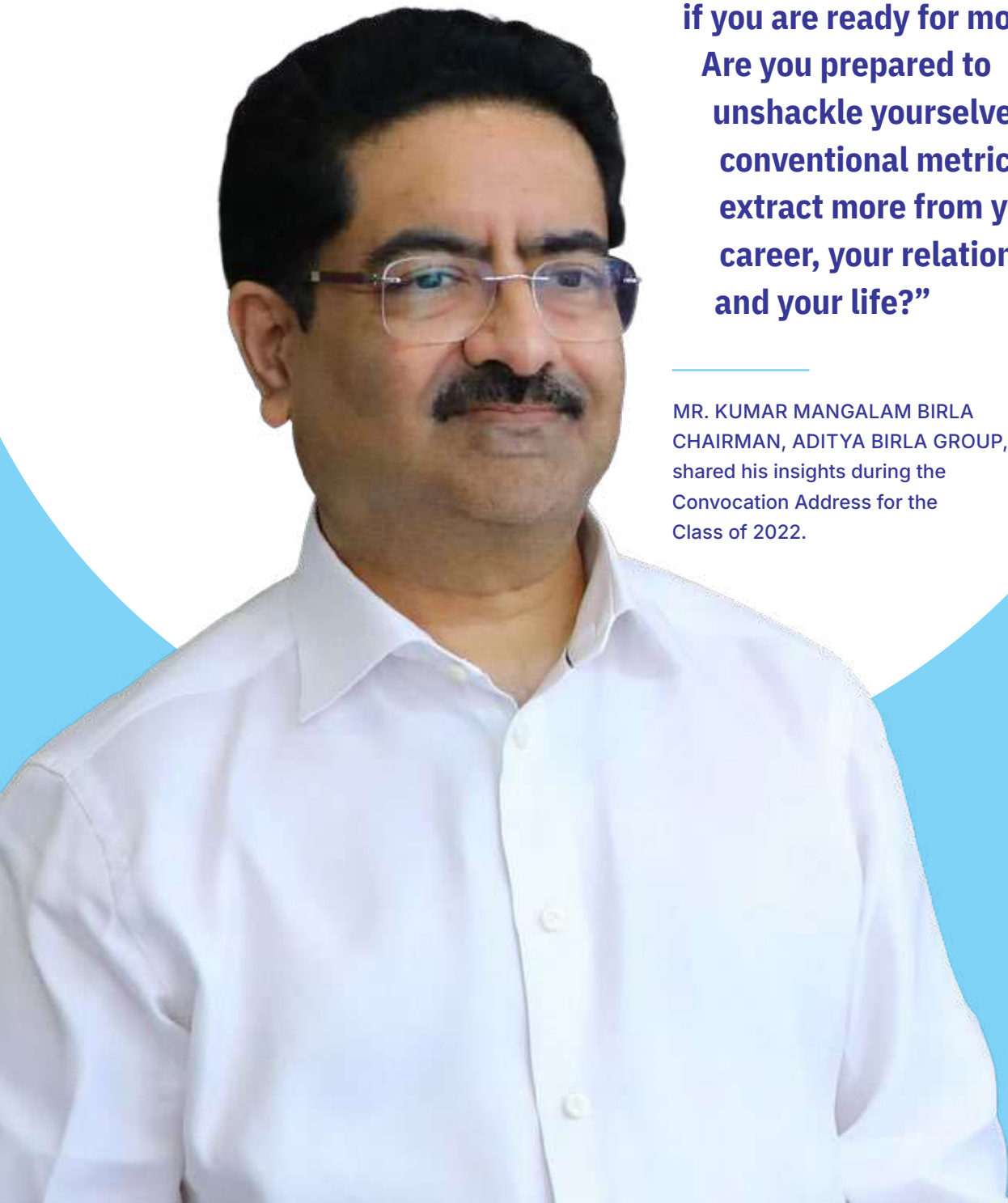
“ You are the leaders of tomorrow,

and your success and fulfillment will come when you know that there is more to life than just the standard markers. As you embrace the world outside, I would

exhort you to ask yourselves:
if you are ready for more?

Are you prepared to
unshackle yourselves from
conventional metrics and
extract more from your
career, your relationships,
and your life?”

MR. KUMAR MANGALAM BIRLA
CHAIRMAN, ADITYA BIRLA GROUP,
shared his insights during the
Convocation Address for the
Class of 2022.



Of the Students, By the Students, For the Students

Student Governance – Vision

Students are the life and soul of any educational institution. The Student Council and Executive Committee (SCEC) serves as the voice of the student community. It acts as the bridge between the student community and the administration of the institution. It also provides a platform for the students to hone their leadership and communication

skills. The SCEC is responsible for executing the tasks entrusted to them and maintaining smooth coordination with the students and the management. In addition, the SCEC is responsible for executing and implementing the student council's policies and advising the management in all academic and non-academic matters related to the student community.

“**Becoming the Student Council President has been a journey of responsibility, growth, and dedication. As I look back, I see each small step I climbed to reach this position—the challenges, the learning, and the experiences that shaped me. And now, with every decision and initiative, I continue climbing, preparing to conquer new endeavours beyond this role. Serving the student community means a lot to me. It’s about ensuring that every student feels heard, valued, and empowered. Whether it’s addressing challenges, organising events, or bridging communication with the administration, every effort is made with the goal of enhancing the student experience and creating a lasting impact.”**

KARTIK MEHTA, B.TECH (2022-26),
PRESIDENT OF SCEC (2024-25)



As part of its commitment to foster a readiness for societal engagement and entrepreneurial spirit in graduates, BMU has supported initiatives in the form of Clubs and events set up and led by students.

They cover many domains and create spaces to apply curricula and non-curricula learning and interests—computation machinery, innovation &

design, robotics, finance & economics, industrial relations, education support to students in proximate villages through SAVERA (Students as Volunteers in Education to Reach and Assist), hiking, photography, debating, culinary club, and many others. These clubs and initiatives have allowed a space for every student to pursue their interest and find a community.



The SCEC Team.

2022 School of Management ranked 54 in NIRF Rankings.

Sustainability at BMU: A Decade of Action, A Future of Impact

At BMU, sustainability is not just a goal—it's a responsibility, a mindset, and a movement. Over the past decade, we have transformed our campus into a living laboratory for sustainability, where innovation meets impact. Our mission extends

beyond reducing our environmental footprint; we are shaping **leaders, policies, and solutions** that redefine the future of sustainable living—locally, nationally, and globally.

Building A Green Campus: A Model for the Future

Water: From Conservation to Transformation

We are committed to sustainable water management through multiple initiatives. With **21 rainwater harvesting pits** in operation and 11 more underway, we are maximising groundwater recharge. A **7-lakh liter/day Sewage Treatment Plant (STP)** supports water recycling, with two

additional high-capacity STPs planned for future developments. Innovative Nature-Based Water Treatment Systems (NBWTS) enable the sustainable treatment and reuse of greywater. Additionally, regular water audits help optimise usage, reduce waste, and enhance overall efficiency.

Zero Waste & Circular Economy: From Trash to Resource

We are advancing sustainable waste management with **1859 kgs (Year 2023-24) of organic waste composted** to enrich campus green spaces. A dedicated waste management and recycling unit is

in development to achieve zero waste to landfill. Students play a key role, co-creating the waste management system, which is integrated into the curriculum for ECA credits.

Renewable Energy: Powering the Future Sustainably

With 286 kW of solar power installed, 1,495 tons of CO₂ emissions are offset annually. As part of Vision 2030, plans are underway for a solar-powered Academic Block (E3) and off-site power purchase agreements (PPAs) to reduce Scope 2 emissions. Currently,

4.7% of energy needs are met through renewables, with continuous upgrades to expand solar infrastructure. Regular energy audits ensure a data-driven approach to maximising efficiency and minimising waste.

Green Infrastructure & Biodiversity: Nature as Our Blueprint

With 80% of the campus covered in greenery, BMU nurtures a thriving ecosystem of 2,000+ native trees and 8500 sq. mtr shrubs. Its IBGC-certified infrastructure aligns with global green building standards. Beyond campus, rural afforestation drives in Haryana expand

sustainability efforts, including a landmark initiative where students, faculty, and local youth planted 1,000 trees in a day. A carbon sequestration study further engages students in measuring and analysing real-time carbon capture from these afforestation efforts.



Beyond The Campus: Shaping Communities, Policies, And Bringing Change

Education & Innovation: Creating Sustainability Changemakers

Sustainability Across Disciplines

Courses, workshops, and experiential learning embedded across **Engineering, Management, Law,** and **Liberal Studies.**

Scalable Research & Innovation

Cost-effective, industry-ready solutions that drive **real-world transformation.**

Sustainability in Focus: From Campus to Community

Community-Led Sustainability

Partnering with local NGOs and government bodies to drive **clean air, clean water,** and **green spaces.**

Regional Policy Influence

Contributing to **policy, education,** and **social transformation** to embed sustainability into governance structures both within and beyond the university.

Global Knowledge Exchange

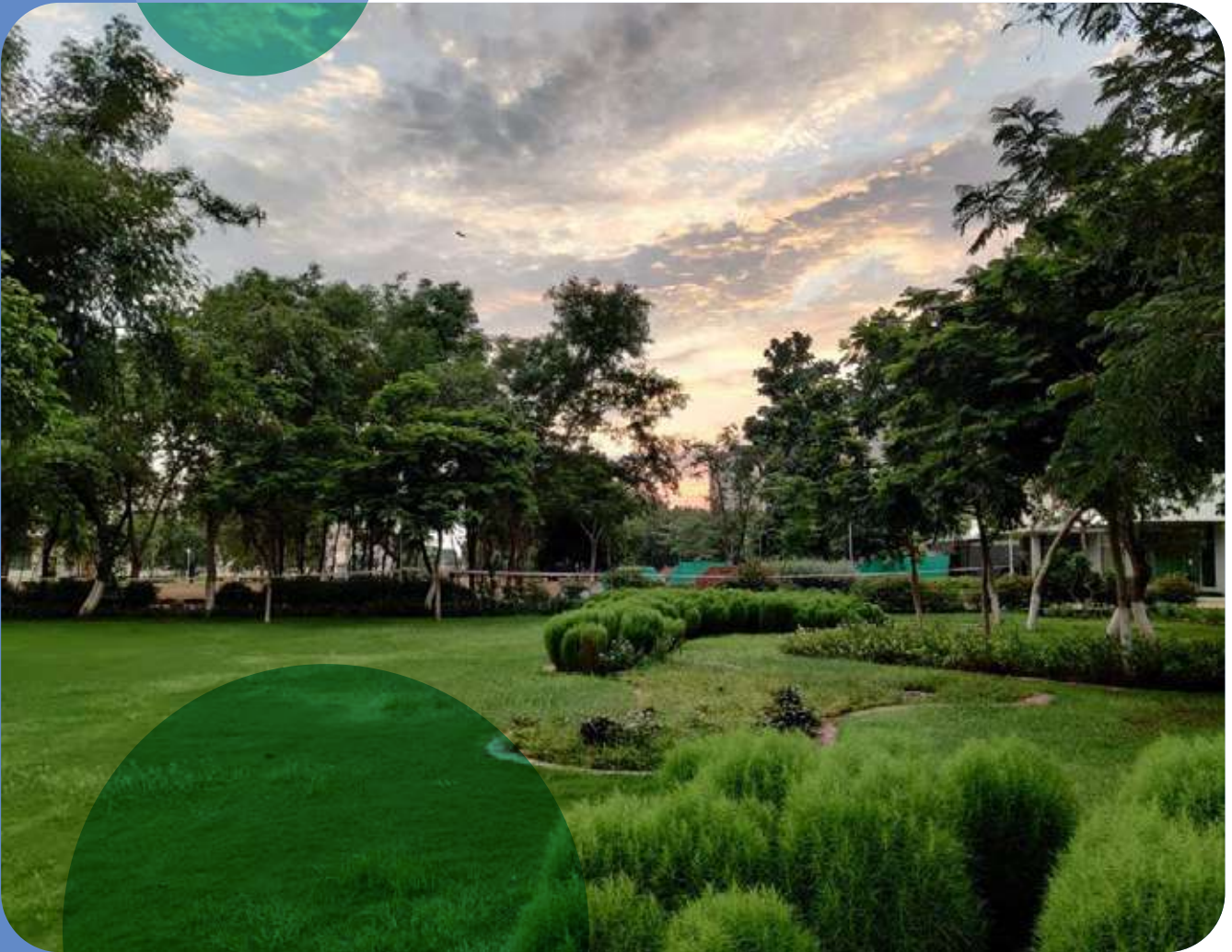
Actively shaping conversations on sustainability through international conferences, research dissemination, and SDG-aligned initiatives.

The Next Decade: A Bold Vision For A Sustainable Legacy

BMU's commitment to sustainability is unstoppable, measurable, and scalable. As we step into the next decade, our vision is clear:

- **A net zero emissions, zero waste, and zero discharge campus.**
- **A sustainability innovation hub driving policy, business, and technology solutions.**
- **A global model for sustainable education and impact.**

This is not just a university initiative. This is a movement.
This is our legacy.



Financial Sustainability

BMU is fortunate to receive immense support from like-minded partners such as the HMCL family, the promoters, and generous CSR donors. Their contributions have been instrumental in shaping the university's growth, enabling us to go the extra mile in democratising quality higher education for bright minds from all social and economic backgrounds. The diversification of courses has further attracted a growing number of students, reinforcing BMU's impact and reach.

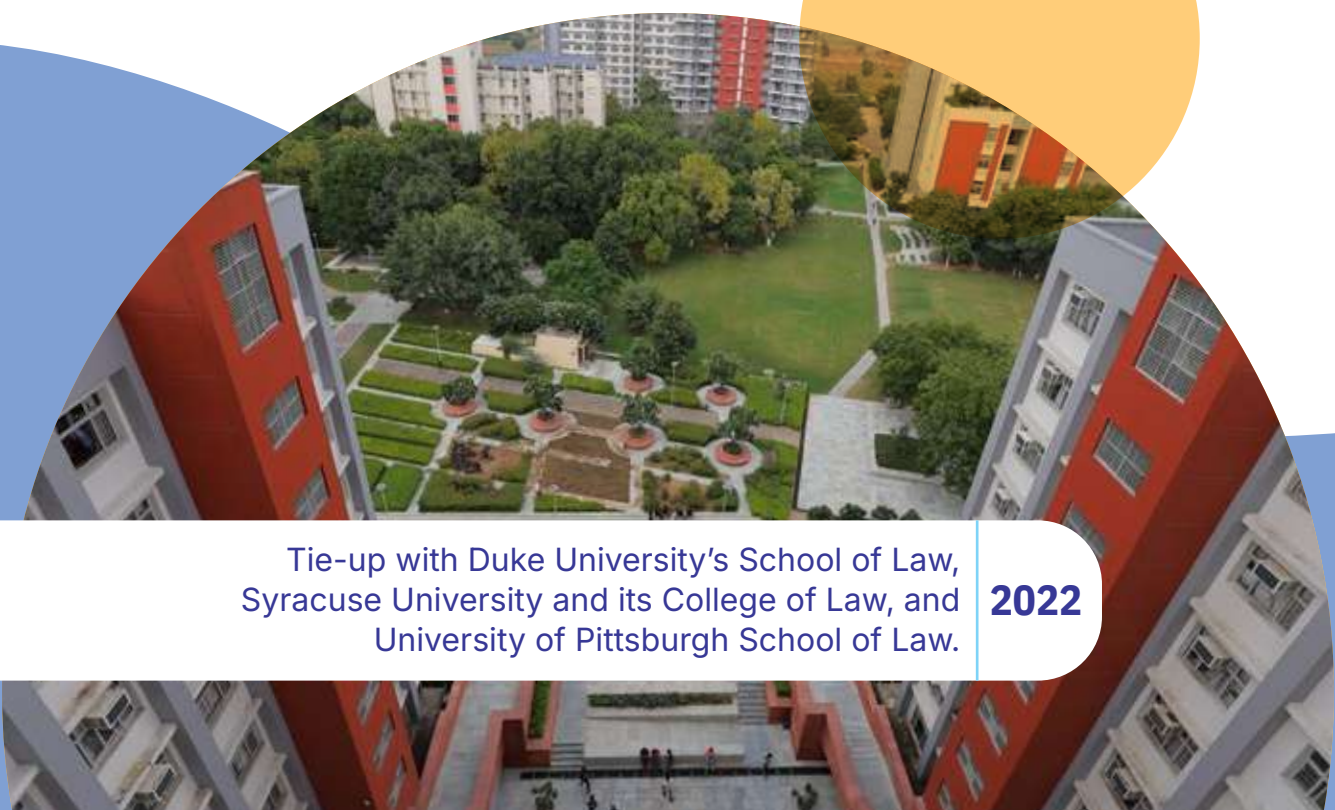
This strong foundation has allowed BMU to achieve operational self-sufficiency, with a sustainable revenue model primarily driven by student fees and a multidisciplinary student base. As a result, the university efficiently manages day-to-day operations while strategically channeling external funding towards long-term growth initiatives such as infrastructure development, research innovation, and global collaborations. This approach ensures financial resilience, empowering BMU to continuously enhance academic excellence, industry engagement, and student success while securing a sustainable future.

“ Education is a fundamental human right. It's the bedrock of societies, economies, and every person's potential. But without adequate investment, this potential will wither on the vine.”

ANTÓNIO GUTERRES, SECRETARY-GENERAL, UN

Tie-up with Duke University's School of Law, Syracuse University and its College of Law, and University of Pittsburgh School of Law.

2022



Fundraising

A University is a public good.

It is built and sustained by the like-minded organisations and individuals who come together to make meaningful contribution in building the future of the nation.

BMU has support of eminent organisations and foundations in the form of scholarships, chair professorships, assets and research and development.

Some of Our Noteworthy Donors



The donor organisations fund and engage with BMU by

Supporting scholarships

Provides an opportunity to support students coming from diverse socio-economic backgrounds and build an engagement through mentorship, guest lectures, internships and career opportunities.

Naming physical assets

Academic Building, Hostels, Student Commons, High-tech Classrooms, Sports Field.

Sponsoring intellectual assets

- **Endowing a chair:** Funding will contribute towards deepening intellectual capabilities, enhancing thought leadership and providing opportunities for engagement with the faculty.
- **Funding a lecture series:** Naming a course / series of lectures undertaken by a distinguished faculty.

“ We are happy to be able to support the installation of the Solar Power Unit at BML Munjal University, Haryana. This collaboration for ICICI Solar Power PV Tinkering Lab will significantly aid in not only utilising clean energy in the university, but educate the young generation about this powerful resource which will help save the planet. Replacing conventional power sources with renewable energy is the way towards creating a sustainable and carbon-neutral environment. ICICI Foundation is committed and undertakes various initiatives for environmental sustainability.”

MR. ANUJ AGARWAL, FORMER COO, ICICI

“ He [Dr BML Munjal] believed in the ethos of hard work and integrity. What endeared people towards him was—he set-up a work culture that was both humble and inspirational. An important lesson that he practiced and shared from early days was that even if you believe you are not capable, you need to try wholeheartedly. Only then you will learn, make a mistake if necessary, and push yourself to do better. But learn from each mistake.”

MR. AJAY S. SHRIRAM
CHAIRMAN & SR. MANAGING DIRECTOR - DCM SHRIRAM LTD.

2023

Partnered with MG Motors Pvt Ltd for Nurture Programme.



Strengthening BMU's Future Pathway

At its 10-year milestone, BMU stands at a pivotal point to reflect on its achievements, reinforce its founding vision, and define its aspirations for the future. The university now has the **critical mass of disciplines, faculty, and students** to leverage interdisciplinary synergies and position itself as a **leader in holistic education, research, and social impact**.



Institutional Integration and Leadership

BMU will deepen the alignment of its **vision across all levels**—faculty, leadership, and operations—to foster a **culture of reflection, innovation, and responsible leadership**. Strengthening internal symmetry and collaborative thinking across disciplines will be key in creating cutting-edge knowledge and fostering an entrepreneurial mindset.

Social Impact and Knowledge Generation

BMU's commitment to **societal transformation** has guided decisions on new schools, research, and student initiatives. Moving forward, the university will **define and measure social impact more systematically**, enhance collaborations with communities, and adapt its systems and processes to align with this mission, including faculty incentives and research priorities.





Positioning and Public Engagement

BMU is committed to **building a strong and recognisable identity** by aligning its academic excellence, faculty expertise, industry collaborations, and research impact into a unified brand. A **thriving alumni network** will play a pivotal role in mentoring students, creating career opportunities, and fostering lifelong connections. Through **public events, thought leadership discussions, and innovation showcases**, BMU will continue to engage with industry, academia, and society—reinforcing its reputation as a centre for learning, innovation, and societal impact.

Entrepreneurial Thinking and Infrastructure

BMU's **entrepreneurial ethos** will extend beyond incubation to instil **creative problem-solving, resilience, and adaptability** across disciplines. Investments in **physical infrastructure**, such as a **Makers' Lab** and **dynamic learning spaces**, will enhance interdisciplinary collaboration, innovation, and technology-driven learning.



Financial Sustainability and Growth

While BMU has achieved operational self-sufficiency, future growth requires **diversified revenue streams**, including **CSR funding, philanthropic contributions, executive education, and strategic partnerships**. Strengthening brand positioning and industry collaborations—alongside long-term committed partners from corporate, government, international, and academic sectors—will drive admissions, corporate engagement, and financial sustainability, ensuring BMU's continued impact and innovation.



As BMU charts its next decade, a **shared vision, interdisciplinary synergy, impactful research, and a commitment to social good** will be instrumental in shaping the university's next phase of excellence.



BML MUNJAL UNIVERSITY™

**Dedicated to the Nation
by**

**Shri Pranab Mukherjee
Hon'ble President of India**



“ In the emerging global scenario, the quality of higher education imparted will play an important role in moulding the careers of young men and women. In less than ten years from now, nearly 140 million people will be in the college-going age group. Every fourth graduate in the world will be a product of our higher education system. In such a competitive environment, only those professionals who are properly skilled and trained will achieve success. The onus is on the higher educational institutions to prepare their students in a way that they are

globally relevant and yet sensitive to the needs of the local socio-economy.”

DR. PRANAB MUKHERJEE, FORMER PRESIDENT OF INDIA, during the Inauguration of BMU.

t

Our Impact, Our Promise

As we mark ten years of BML Munjal University, we don't just look back—we look ahead. This journey has been one of transformation, from reimagining education to shaping industries, empowering changemakers, and fostering innovation with real-world impact.

Our graduates are leading in boardrooms and laboratories, in start-ups and social enterprises, proving that education is not just about knowledge—it is about action. Our research is solving tomorrow's challenges today, and our commitment to inclusion and sustainability continues to drive meaningful change in communities near and far.

Yet, this is just the foundation. The next decade is not about what we have built but what we will become. With courage, vision, and an unrelenting drive to make a difference, BMU will continue to break barriers, challenge norms, and inspire generations to lead with purpose.

The story of BMU is still being written—one bold idea, one breakthrough, and one changemaker at a time. The best is yet to come.



